

The new generation of radio systems for group tours

# Orpheo Tour Guide

## Digital Radio guide



The OTG wireless system allows you to overcome background noise of your site, thus providing quality tours for the guide and their visitors, even in very noisy surroundings.

**High range** signal (100m)

Digital audio quality

**50 channels** available

Integrated antenna

**Flex mode (Transmitter/Receiver)**



Made in **France**

**OLED colour** display

**Two headset** jacks

**Weatherproof** and resistant enclosure

**Long lasting** Lithium Ion battery (50h)

**3 formats** of charging rack

# Technical specifications



## OTG

9,5 x 5 x 1,6 cm - 112g

### GENERAL

Each device can be configured as a Transmitter or as a Receiver

**Flex mode:** Switch between Transmitter or Receiver mode at any moment for greater flexibility

Display: **OLED colour** screen 128 x 96 pixels

**USB 2.0** port for configuration, firmware upgrade and battery charging

5-key touchpad with raised markers (visually impaired)

**50** selectable **channels**

### ENERGY

Battery: 2100 mAh Lithium Ion Polymer 3.7V

Autonomy: Receiver = **50 hours** and Transmitter = **20 hours**

Indication of remaining battery life (in hours) on the display

Full charge cycle: **6 hours**

Temperature range for operation: -10°C ~ 40°C

Temperature range for battery recharging: +5°C ~ 35°C

### RADIOFREQUENCY

Carrier frequency range: ISM/SRD 2400 - 2480MHz

Adjustable frequency management **up to 50 groups** at the same time

Integrated antenna

Operating range: **100m** (open field)

Power: -30dBm to +15dBm

Sensitivity: -103dBm

Adjacent channel rejection: 23dB

**Reception quality indicator** on the display

Automatic detection of a channel availability

### AUDIO

Audio quality: digital flow 8KHz 16bits PCM mono

Audio input: **microphone and auxiliary**

Signal noise ratio: 95dB / Distorsion: -80dB

Audio output: **2 headphone jacks** - standard 3.5mm stereo (3-pin)

Signal noise ratio: 98dB / Distorsion: -84dB

Compatible with audio induction loops (hearing impaired)

### CHARGER

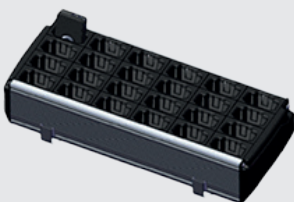
Power supply: 100V -240V AC 50Hz/60Hz 70W

**24 charging slots**

**Simultaneous channel configuration** via a master device

**3 formats:**

- DESK: Standard free-standing charger (wall hooks optional)
- SUITCASE format with lid and carrying strap
- BAY: 19" compatible, rackable into existing furniture



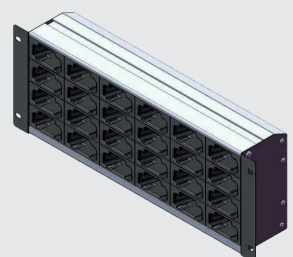
**DESK standard charger**

45 x 17,6 x 9 cm - 2,5kg



**SUITCASE charger**

45,8 x 18,5 x 9,3 cm - 4kg



**BAY rackable charger**

48,3 x 17,6 x 9 cm - 2,5kg

# Compatible accessories

## FOR VISITORS AND TOUR LEADERS (TRANSMITTERS AND RECEIVERS)

Orpheo lanyard customisable on request



## FOR VISITORS (RECEIVERS)

**Orpheo Airset** headphones



**Semi-rigid mono** earphone



**Stereo headphones**  
*(optional hygienic protective covers)*



## FOR TOUR LEADERS (TRANSMITTERS)

**Headset** microphone



### GRENOBLE

6, rue Valérien Perrin - 38170 Seyssinet-Pariset - France  
tél : +33 (0)4 38 12 40 60 - fax : +33 (0)4 76 96 22 34  
[www.orpheogroup.com](http://www.orpheogroup.com) - e-mail : [contact@orpheogroup.com](mailto:contact@orpheogroup.com)

### PARIS

17, rue de Montreuil - 75011 Paris - France  
tél : +33 (0)1 40 09 53 39 - fax : +33 (0)9 54 67 47 76  
[www.orpheogroup.com](http://www.orpheogroup.com) - e-mail : [info@orpheo.fr](mailto:info@orpheo.fr)

Since 1992, Orpheo has played a leading role in the world of visitor tour solutions.  
Every day, millions of visitors use Orpheo's solutions around the world.

